

EXECUTIVE SUMMARY

Western Uplands Poverty Alleviation Project (WUPAP) is the Ministry of Local Development (MLD) led project implemented under the technical assistance and loan support of International Fund for Agriculture Development (IFAD). The project has begun from January 2003 for a period of 11 years that completing in March 2014. It covers 11 districts of Mid and Far western districts of Nepal in three phases; (i) Jumla, Humla, Bajhang and Bajura - started in the first phase (2003), (ii) Dolpa, Mugu, Kalikot and Jajarkot – started in the second phase (2008) and (iii) Dailekh, Rukum and Rolpa will be starting in the third phase (2011).

The project basically has twin objectives of improving degraded forest land and poverty reduction thereby leasing out such forest land to the targeted community for a period of 40 years with possible extension of another 40 years. It is designed with following five components.

i) Labor intensive infrastructure development, ii) Leasehold Forestry and NTFP production, iii) Crop and Livestock production, iv) Institutional support, v) Rural Micro Finance

MLD has established a Project Coordination Unit in Nepalgunj for its overall management. Local Development Fund Board (LDFB) established under District Development Committee take the lead role in the respective districts accompanied by other stakeholders: District Forest Office, District Agriculture Development Office, District Livestock Service Office and Nepal Agriculture Research Council, Non-governmental Organizations (DEPROSC Nepal) and private sectors such as DABUR Nepal Private Ltd. (DNPL) and Herbs Production and Processing Co. Ltd. (HPPCL).

Development Project Service Centre (DEPROSC Nepal), a solely involved NGO is financed by Embassy of Denmark for a period of 6 years starting from January 2003 to March 2009 (in two phases: Jan. 2003-Dec. 2005 and March 2006-Mar. 2009) to provide social mobilization support on the Leasehold Forestry and NTFP production. Main responsibilities of DEPROSC Nepal remained forest mapping, institutional mapping, lease land identification, group members identification, leasehold forestry group formation, obtaining community consensus, operational plan (OP) preparation, processing of OP, obtain approval of OP, and handing over of leasehold forest. Besides, DEPROSC Nepal has also implemented some quick returning income generating activities, capacity building and technology transfer training and support for institutional development of leasehold groups.

In the second phase alone, 3380.46 ha of LF land has been handed over to 3069 members of 179 LFUGs consisting of 52.69% female, 15.02 % socially deprived members - so called dalit - and 7.85% ethnic members. So far, DEPROSC Nepal with DANIDA's support has handed over 6659.36 hectares of land to 5595 members/ households represented from 347 leasehold forestry user's group (LFUGs). Occupational and deprived caste representation is 17.5 per cent and Ethnic people representation is 9 per cent among the land obtaining beneficiaries. Similarly, some 49 per cent lease beneficiaries are women.

Danish assistance on social mobilization has played significant role on handing over the lease land to the targeted beneficiaries. Besides, land development process has begun. Open grazing tradition has been controlled in most of the lease sites thereby generating sizable grass and fodders that has reduced work load of women.

Cultivation of non-timber forest products and medicinal plants has taken places in number of sites. Similarly, fruits plantation and timber tree plantation has taken place which would not only generate income in future but also has contributed for environmental rehabilitation.

Various skills development and technology transfer training such as nursery raising, land management, vegetable and NTFP cultivation, livestock raising, off-farm enterprises development, vaccination campaign, followed by input support (mainly she goats, buck for breeding, chickens, vegetable seed, bee hives, fruit saplings, tools etc.) has benefited women, children and deprived community of the area.

The project has also supported LFUG members for their savings and credit mobilization, institutional strengthening with training, input support (stationary) and system building. LFUG members are facilitated to obtain support services from the government line agencies and WUPAP as well. Besides, all the LF sites and groups are categorized into different three levels based on their handed over forest land situation and group capacities.

LF land are categorization based on the potentiality of the forest shows that only 65 LFs are of high potential, 265 as potential and 28 as less potential sites. Similarly, LFUGs are also categorized based on their capacity where 38 LGUGs falls under good-‘A’, 294 are fair -‘B’ and 26 LFUGs as weak-‘C’.

WUPAP itself has also been benefited from the institutional and forest mapping done in the four districts: Jumla, Humla, Bajhang and Bajura where a total of 39,991 ha. of potential lease land was identified based on which, the programme VDCs are being selected.

In addition, input support has also been provided to LF members to encourage them towards LF development and to sustain their livelihood at present. Accordingly, 301.15 kg of vegetable seeds to 298 LFUGs, 248 she goats to 123 LFUGs and 24 bucks to 22 LFUGs were supported. Altogether, 13 animal health campaigns were conducted benefiting 12380 livestock of 120 LFUG members.

Social mobilization process, however has included some training and input support for income generation and land development, the investment is negligible compared to the need. Improvement in handed over degraded forest land to deprived people and generation of income out of it requires sizable labour investment which is the most difficult investment for them.

Nevertheless, social mobilization on leasehold forestry component under WUPAP has established ground for;

- LFUGs mobilization for other development related programs,
- Rehabilitation of degraded forest land thereby enhancing income level of the participating poor through various forest related income augmenting activities as well as enhancing capacity to gain even from international opportunity like carbon trading,
- institutional development at grass root level,
- capacity building and empowerment of grassroots level people to directly approach with line agencies, and interact with outsiders (Intellectuals, government officials and development workers) with enhanced confidence for their sustainable development.

TABLE OF CONTENTS

1. GENERAL BACKGROUND:	5
1.1 WUPAPI PHASE:	6
1.2 WUPAP SOCIAL MOBILIZATION PHASE II	6
1.2.1 Leasehold Forest Development:	7
1.2.2 Income Generation and Micro Enterprise Development:	8
1.2.3 Program Stakeholders:.....	8
1.2.3.1. Functional Relationship among Stakeholders:	8
1.2.3.2 Program Management and Staffs	9
2. OBJECTIVES:	10
3. MAJOR ACHIEVEMENT	11
3.1 PROGRAM COVERAGE	11
3.2. MANAGEMENT AND COORDINATION:.....	12
3.2.1 Leasehold Forestry Land Categorization:	15
3.2.2 LF Group categorization	16
3.3. SOCIAL MOBILIZATION AND CAPACITY BUILDING:	18
3.4. LEASEHOLD FORESTRY DEVELOPMENT:	20
3.5 INCOME GENERATION AND MICRO ENTERPRISE DEVELOPMENT:	23
3.5.1. Vegetable Seed Support:	23
3.5.2. She Goat Support:	24
3.5.3 Buck Support:.....	24
3.5.4. Animal Health Campaign:	25
3.6 Saving Status of LFUGs in different districts	26
3.7 Credit Capital provided to LFUG through LDF	27
4. PROBLEMS ENCOUNTERED:	31
5. APPLIED SOLUTION MEASURES:	32
6. LESSON LEARNT:	33
7. RECOMMENDATION:	34

LIST OF TABLES

TABLE 1: LIST OF PROJECT IMPLEMENTED VDCs IN FOUR DISTRICTS DURING II PHASE	7
TABLE 2: POTENTIAL AREA COVERAGE BY LF IN ALL PROJECT IMPLEMENTED DISTRICTS	11
TABLE 3: HOUSEHOLD COVERAGE IN ALL PROJECT IMPLEMENTED DISTRICTS.....	12
TABLE 4: RESULT OF LF LAND CATEGORIZATION.....	16
TABLE 5: RESULT OF LFUG CATEGORIZATION.....	17
TABLE 6: PROGRESS STATUS OF LFUGs IN II PHASE ALONE.....	21
TABLE 7: PROGRESS STATUS OF LFUGs COMPILING BOTH I AND II PHASE	22
TABLE 8: SAVING STATUS OF LFUGs IN ALL DISTRICT TILL DATE.....	26
TABLE 9: CREDIT CAPITAL TAKEN BY LFUGs IN ALL PROJECT IMPLEMENTED DISTRICTS.....	27

LIST OF FIGURES

FIGURE 1: ORGANIZATIONAL STRUCTURE OF DEPROSC-NEPAL FOR WUPAP PROJECT.....	10
FIGURE 2: LF LAND Vs LFUGs CATEGORY.....	17
FIGURE 3: STATUS OF GENDER BALANCE AND SOCIAL INCLUSION IN I PHASE	22
FIGURE 4: STATUS OF GENDER BALANCE AND SOCIAL INCLUSION IN	22

1. GENERAL BACKGROUND

Poverty reduction through the management of natural resources is practical concept. Poor people do not have any access other than natural resources thus they must depend on it. Consequently, poor people have no choice but to engage in unsustainable uses of natural resources and Nepal is no exception. About 44% of people in rural areas and 23% in urban areas live below the national poverty line. Further, upland areas are remote and harsh with low rainfall and poor access. Many people living in these mountainous areas suffer serious food insecurity. Malnutrition rates among young children in such areas are among the highest anywhere in the world. Agriculture is still the mainstay of the economy, employing around 81 per cent of the population though the output is low. Eventually, there is a scope for boosting the income of local people through livestock, crop and forestry production.

Western Upland Poverty Alleviation Project (WUPAP) is the government project implementing through Ministry of Local Development (MLD) under the technical assistance and loan support of International Fund for Agriculture Development (IFAD). The project has begun from January 2003 for a period of 11 years ending in March 2014. It covers 11 districts of Mid and Far western region of Nepal in three phases i.e. (a) Jumla, Humla, Bajhang and Bajura in the first phase (2003), (b) Dolpa, Mugu, Kalikot and Jajarkot in the second phase (2006) and (c) Dailekh, Rukum and Rolpa in the third phase (2008). The project basically has twin objectives of degraded forest land rehabilitation and poverty reduction thereby leasing out such forest land to the targeted community for a period of 40 years with possible extension of next 40 years. Specifically, the project has five major components which are as follows:

- i) Labor intensive infrastructure development,
- ii) Leasehold Forestry and NTFP production,
- iii) Crop and Livestock production,
- iv) Institutional support, and
- v) Rural Micro Finance

Among these five major components, the component of leasehold forestry and NTFPs production is the heart of the project. The component consists of selecting targeted people, associating them into a leasehold forestry groups and brings to the mainstay of other input support to enhance their livelihood. Social mobilization is the fundamental approach to make them functional. Concurrently, DEPROSC Nepal is involving into this social mobilization process since September, 2002 with the financial assistance of Embassy of Denmark particularly in the first phase districts i.e. Humla and Jumla of Karnali Zone of Mid Western Development Region and Bajhang and Bajura of Seti Zone of Far Western Development Region. The project implemented districts contains 131 Village Development Committees (VDCs) in total. However, the project was launched into merely 40 VDCs, selecting 10 VDCs from each district. It accomplished all the envisioned activities successfully and made measurable impact in the project area. Consequently, the project provided great support to government initiation. Thus, the project again entered into II phase since March, 2006 to March, 2009. Now, the II phase

has also been completed. This is the project completion report of second phase. This report encapsulates introduction of the project, its objectives, major outputs, its impact on the relevant area, faced problems, applied solution measures and recommendations.

1.1 WUPAP I Phase

In the first phase it was targeted to handover 3000 ha of barren land as leasehold forest in 40 VDCs of the four districts forming 125 user groups. By the end of project period, 3278.9 ha leasehold forest land was handed over to 168 user groups in 27 VDCs. Altogether, 2,526 targeted beneficiary households were associated with these 168 LFUGs. In remaining 13 VDCs, leasehold forests development program was not implemented during the project period. Similarly, 158 numbers of different training were provided to LFUG member. For instance: leasehold forest development, NTFP nursery management, bee keeping, poultry farming, vegetable cultivation, goat keeping and piggery rearing. Altogether, 3,218 LFUG members comprising 43% females and 18% socially excluded (so called dalits), have participated in the training. Similarly, vegetables seed, bucks, poultry, bee hives and piglets were also supported in Humla and Jumla district as an input support to boost up income generating activities. Likewise, micro irrigation support was also provided to 5 LFUGs of Jumla and Humla district to promote their farming activities.

1.2 WUPAP Social Mobilization Phase II

Primarily, it was designed to support 10 new VDCs of each program implemented district through social mobilization in forming new LFUGs as well as to facilitate LFUGs formed in phase I. The agreement was also done with DANIDA in the same tune. However, DDC/LDF had not selected 10 more VDCs for WUPAP into each district at the start of second phase of the project. Thus, an understanding was made between WUPAP, PCU and DEPROSC-Nepal that DEPROSC Nepal works on the same 40 VDCs until the selection of new VDCs in all program implemented districts and further priority had to give on remaining 13 VDCs of first phase selected VDCs to implement the program. Accordingly, VDCs covered along with potential leasehold forest available during second phase of WUPAP are as follows.

Table 1: List of Project Implemented VDCs in Four Districts during II phase

VDCs of Humla	Potential Lease Land	VDCs of Jumla	Potential Lease Land	VDCs of Bajhang	Potential Lease Land	VDCs of Bajura	Potential Lease Land
Khagalgaon	605	Chandannath	456	Byansi	584	Kailashmandu	318
Simikot	787	Patmara	590	Pouwagadi	108	Barbis	319
Thehe	620	Talium	263	Royal	741	Dahakot	123
Kharpunath	525	Ghode	121	Chainpur	351	Aattichaur	505
Muchu	595	Malikathanta	266	Dantola	288	kotila	348
Chhipra	135	Shanigaon	554	Kanda	1024	Pandusain	205
Hepka	710	Dhapa	265	Dhamena	125	Bandhu	725
Dandafaya	117	Kundari	340	Majhigaon	438	Bramhatola	170
Bargaun	550			Rilu	221	Kolti	196
Lali	325			Parakatne	221.5	Kuldevmandu	113
				Kaphalseri	489		
				Khiratadi	302		
Total	4969		2855		4892.5		3022

1.2.1 Leasehold Forest Development

Leasehold Forestry development is a strategic program. It was envisioned long back in Nepal. Forest Act 1993 and regulation 1995 have clearly provisioned the possibility for hand over of the degraded forest and barren land as leasehold forest to the individuals and communities for their economic upliftment. Poor, socially excluded and women, whose livelihood entirely depends on forests, are the most targeted group for leasehold forestry development as a poverty alleviation program. It includes all small farmers, harvesters, collectors, herders, traditional healers, local traders and entrepreneurs involved in the forestry enterprises. No doubt, landless farmers are the most targeted group. Therefore, the program focus on handing over of degraded lands to a group of poorest of the poor households (leasehold groups) comprising women, landless farmers and Dalit initially for the period of 40 years with a provision of extending for next 40 years in order to maintain the supply of forest product on a sustainable basis. In leasehold forestry, benefits flows directly to poor and aims to strengthen the poor community by granting public land and creating institution (leasehold groups within the community organization (COs)), external to the traditional social structures and empowering the poor and marginalized with the ownership of substantive resources and group networking capability. Apart from the equity aspects, the program is highly effective in restoring the eco-balance in every fragile area. Meanwhile, the project is moving ahead adjoining nature conservation and poverty alleviation goal at national level.

1.2.2 Income Generation and Micro Enterprise Development

This component has been designed as a supplementary component for social mobilization in Leasehold forest. Targeted group of this component are deprived HHs, women, socially excluded and ethnic caste. Simultaneously, handed over land is also degraded which demands high labor contribution in the process of leased land management and converting them into a productive asset. Therefore, income generating activities as an immediate support to raise their economic level and to promote locally adaptable micro enterprises was felt obligatory.

Thus, this sub-component envisaged to energize the targeted group towards vegetable production, livestock raising activities along with different skill development training to improve productivity. Though less in quantity, input support to initiate such income generating activities were also provided.

1.2.3 Program Stakeholders

The project was implemented in collaboration with Ministry of Local Development (MLD), Department of Forest (DOF), District Forest Office (DFO), Nepal Agriculture Research Council (NARC), International Center for Integrated Mountain Development (ICIMOD) and Local Development Fund Board (LDFB) under District Development Committee (DDC) of the respective district in the first phase. Dabur Nepal and Herbs Production & Processing Company Ltd. (HPPCL) were also the private sector partners in this project. DEPROSC-Nepal with the financial assistance from Embassy of Denmark had the role of social mobilization to handover leasehold forest and enable them for developing leasehold forestry.

Outcomes of the pre-project action research completed in April 2005 in Humla and Jumla with the assistance from ICIMOD was also been taken into consideration while establishing NTFP nursery and its cultivation in leasehold forest in the program implemented districts in first phase of the program.

Similarly in II phase, the project was implemented mainly in collaboration with MLD, DoF, DFO, District Agriculture Development Office (DADO), District Livestock Support Office (DLSO) and LDFB of the respective districts.

1.2.3.1. Functional Relationship among Stakeholders

DEPROSC-Nepal was involved in social mobilization process for leasehold forest development and institutional mapping in each district. Mainly, potential lease land identification, group formation, consensus obtaining, site survey, preparation of operational plan of individual LFUGs, training of nursery operators and capacity

enhancement activities were the major responsibilities of DEPROSC-Nepal. DFO had overall responsibility of providing technical assistance and handover of lease land to the beneficiaries. Input support for the promotion and management of NTFPs cultivation, nursery establishment, forest development and other income generation activities to the LFUGs members are supported by the DFO and other stakeholders of the district. In the first phase, the private company Dabur Nepal provided technical support in the form of training to DEPROSC-Nepal and DFO staffs for the identification and propagation of NTFPs. Furthermore, it also supervised the production of NTFP for quality control.

LFUGs are sub-group within the Community Organization (CO) formed by LDFB. COs provide savings and credit services to the LFUG members.

1.2.3.2 Program Management and Staffs

During the entire project period, human resource management was done in the following manner. The Executive Director of DEPROSC-Nepal at head office looked after the whole program implemented by the centre at all level. Project Coordinator at the head office was responsible for developing periodic plans, periodic progress reports and to maintain close coordination with DANIDA, MLD, DoF, Ministry of Forest and Soil Conservation and other line agencies at central level. Monitoring Officer stationed at head office was responsible for frequent monitoring of the program at district level and reporting to the head office. Besides, a Regional Level management system was proceeding from the Regional Office, Nepalgunj. A Forester supervised by Regional Program Manager is stationed at Regional Office, Nepalgunj who made frequent field visit and provided necessary guidance, technical assistance and maintained regional as well as district level coordination with different line agencies including WUPAP PCU and DEPROSC Head Office.

Each district had its own district offices headed by Social Mobilization Officer with a team consisting of a Ranger, two Senior Social Mobilizers and two Social Mobilizers to implement the activities at field level. The district team worked in close coordination with DDC/LDFB, DFO and other line agencies. An Account Officer was stationed at Regional Office, Nepalgunj for necessary account and logistic arrangement. Similarly, an Account Officer stationed at Head Office, Kathmandu was responsible for preparing periodic financial statement, administrative works and others relevant jobs for the project. All together 30 staffs were recruited at central, regional and district level for the proper and smooth implementation of the program in four districts among them 13 were professional and technical staffs.

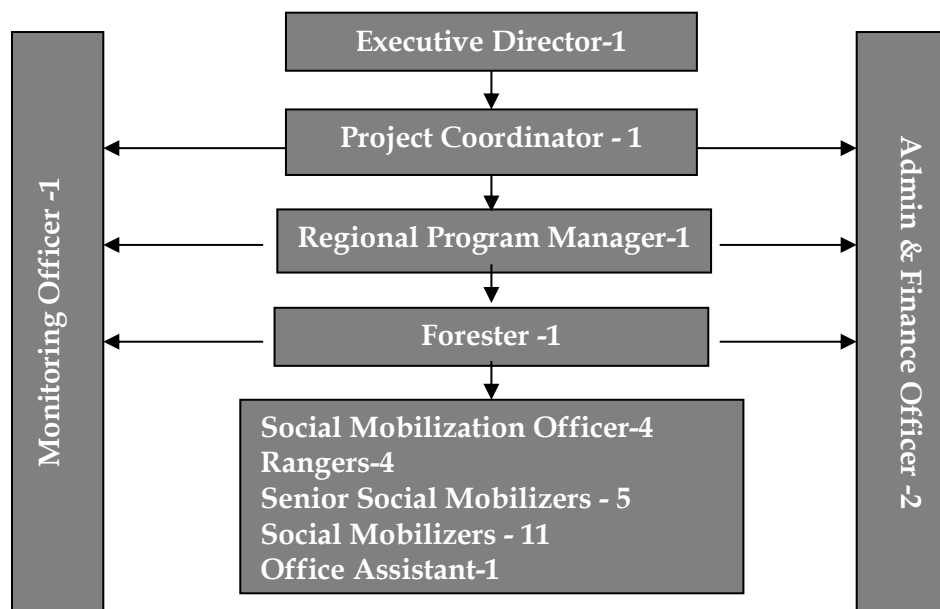


Figure 1: Organizational structure of DEPROSC-Nepal for WUPAP Project

2. Objectives

The program is aimed at facilitating the government initiations at district and community level for implementing leasehold forestry program. The primary objective of the program is to alleviate prevalent poverty at community level through the transfer of barren land and degraded forest to the ultra poor, women, and *Dalit* within the framework of leasehold forestry acts and rules.

The specific objectives of this program are;

- to improve local access and enhance capacity to actively manage resources including timber and non- timber forest products through social mobilization, training and technology transfer,
- to improve and sustain access of landless, poor, women and *Dalit* people to forest through leasehold arrangements,
- to strengthen institutional capacity and improve responsiveness of COs, VCOs and LFUGs to improve the livelihood of the participating members, and
- to improve environmental conditions through proper utilization of degraded forest land.

3. Major Achievement

3.1 Program Coverage

The project covered altogether 40 VDCs of selected four districts. 10 VDCs each were covered in Humla and Bajura districts whereas only 8 VDCs were covered in Jumla district in contrast to Bajhang district which has covered 12 VDCs. The status of potential area coverage in each district has reflected on Table 2.

Table 2: Potential Area Coverage by LF in all Project Implemented Districts

Particulars	Unit	Bajhang	Bajura	Humla	Jumla	Total
Potential leasehold Forest land (ha)	Ha.	15616	5169	9053	10153	39991
No of VDCs Covered in II phase	No.	12	10	10	8	40
Potential lease land in the project implemented VDCs	Ha	4892	3022	4969	2855	15738
Handed over leasehold forest land in II phase in the selected VDCs (ha)	Ha.	919.08	800.50	854.71	806.17	3380.46
Handed over leasehold forest land in I phase	Ha	840.58	907.25	810.57	720.5	3278.9
Total LF area coverage	Ha	1759.66	1707.75	1665.28	1526.67	6659.36
Percentage	%	35.97	56.51	33.51	53.47	42.31

Around 42% of the potential area (15738 ha) of project implemented VDCs are handed over as leasehold forest during both phases. Least potential area is handed over in Humla where as the highest percentage of potential area is handed over in Bajura district. Handing over of 6659.36 ha leasehold forest area has contributed significantly meeting around 30% of the total target of overall WUPAP i.e 22400 ha.

Similarly, some 25 per cent households of the project VDCs are covered. Among them, the highest percentage of household coverage is in Humla district (39%) whereas the least percentage of household coverage is in Bajura district (around 17%). The details are provided in the table 3 here below.

Table 3: Household Coverage by District

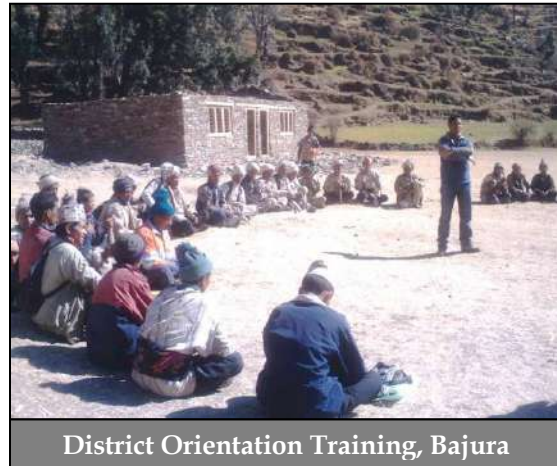
S.N.	District	Total HHs	HHs associated with LFUGs	% of coverage
1.	Humla	2680 (10VDCs)	1048 II phase-570 I phase-478	39
2.	Jumla	5585 (8 VDCs)	1422 II phase-782 I phase-640	25.46
3.	Bajhang	8706 (12 VDCs)	1473 II phase-819 I phase-654	16.92
4.	Bajura	9888 (10 VDCs)	1652 II phase-898 I phase-754	16.70
Total		26859	5595	24.52

Total HHs Data Source: WUPAP, PCU, 2009

3.2. Management and Coordination

Management and coordination aspect has always remained crucial for the success of the project. Field level monitoring, issues identification, application of mitigation measures, coordination with line agencies, progress review and sharing, timely monitoring and evaluation of the project outputs were the major activities undertaken as management and coordination process. Different sorts of monitoring visits, progress review and sharing workshops, coordination meeting with line agencies, participation in various sharing workshops were also done. Such major events accomplished during this second phase are described below.

One central level (3 days) and four district level staff orientation trainings in the respective districts were organized to orient the nature of the project and its working modality. Forester, Monitoring Officer, Social Mobilization Officer, Finance Officers, Rangers and Office Assistant have participated in the central level orientation training whereas District Managers, Social Mobilization Officer, Rangers, Senior Social Mobilizer and Social Mobilizer were present in the district level orientation training. Altogether, some 35 staffs were oriented.



District Orientation Training, Bajura



District Information Meeting, Bajhang

Four District Information Meetings (DIM) were conducted to share at the district level about the continuation of the project. Altogether, 84 participants were participated into the DIM. Basically, DDC chairperson, vice chairperson, CDO, DSP, Military Chief, LDO, DFO, ADO, DLSO, WDO, LDF secretary and other relevant stakeholders were invited in the meeting.

IFAD mid term review and UNOPS monitoring and evaluation team was assisted during their monitoring visit during 5-12th November, 2006 in Humla and Jumla by District/Regional team.

Similarly, DANIDA Mission Team visited in Jumla was welcomed in 17-19th January, 2007.



IFAD Mission Team, Humla

Monthly reporting from district office to Regional Office and half-yearly reporting from Regional Office to Head Office as well as to donors were done timely during the entire project period. Eventually, regular sharing of project achievement was also done on continues basis among the staff.

Review and planning workshop was conducted at the end of each first and second year in each district where some 170 participants have presented. In such workshops, review

of annual progress and planning for the forthcoming year along with budget allocation was done with line agencies representatives.

At the end, 4 District Information Meetings were conducted to share the overall progress and to phase out message. Among which, 45 participants (9% female) in Bajhang, 58 participants (9% female) in Bajura, 57 participants (11% female) in Jumla and 35 participants (3% female) were presented in Humla districts.



Regional Level Review and Planning workshops were accomplished for 2 years discussing field level issues, solution measures, and plan. Representatives of WUPAP, PCU, district level staffs (considering allocated budget) and all other project staffs have participated in the workshop. Those workshops were very much useful in deciding sharing problems encountered, strategic measures to adopt, lessons learnt and best practices.

Finally, a Regional Level Review cum Project Closing Workshop was organized on 24th February, 2009 to share the project's major achievements, irreparable issues, major outputs, recommendations etc. Further, formal closing of the project was also done appreciating whole team for their remarkable contribution making this project a grand success. Executive Director of DEPROSC Nepal and Project Coordinator were present on the occasion.

DEPROSC Nepal, Forester, along with all district Rangers participated into the LF strategy formation and operational plan guideline preparation workshop organized by WUPAP, PCU at Nepalgunj.

Strategy for LF handover into upland area and guideline for operational plan preparation was finalized into the workshop on the basis of IFAD mission report. Moreover, the term active use was also defined into the workshop in a consultative way. Similarly, basic criteria to be updated into the premier operational plan during

revision/reformation were also discussed during the workshop and finally standard criteria for newly forming operational plan were also set in the meeting.

Participation in all Review and Planning Workshops organized by WUPAP/PCU and other regional level meetings and workshops had always been ensured.

On top of this, each leasehold forestry user groups are formally informed about the phase over of DANIDA assisted DEPROSC Nepal's social mobilization at the end so as to avoid the possible confusion among the leasehold members.

3.2.1 Leasehold Forestry Land Categorization

Leasehold forest categorization format developed by WUPAP PCU was applied. This contains criterion such as slope of the land, aspect, distance from irrigation source, irrigated area, soil quality, soil depth, NTFPs coverage, shrub coverage, grassland, distance. District team has categorized all leasehold forest area into A, B and C category as per the weight age that each LF got. In total, 65 leasehold forests lie in category "A", 265 in "B" and remaining 28 leasehold forests in "C" category. The categorization result provides strategic input in developing programmes to support them. Land management plan can be developed based on the quality of land.

The survey shows that some 19% leasehold forests are of high potential where as majority of leasehold forest i.e. 74% are of only good potential. Rest some 7% LFs are of low potential therefore intensive support is necessary to category C LFs. Category B LFs also require sufficient support to convert them into a high potential lease hold forests. Summary finding of leasehold forest land categorization is provided in the table below. The detailed format is presented in **Annex 6**.

Table 5: Result of LFUG Categorization

S.N.	Category	Bajhang	Bajura	Humla	Jumla	Total
1	A	13	4	15	6	38
2	B	56	102	60	76	294
3	C	10	11	0	5	26
Total		79	117	75	87	358

Note: A>383 B=230-383, C<230

Similar to the LF land categorization, most of LFUGs fall under 'B' category. The least number of LFUGs lie on 'C' category. The categorization reflects that social mobilization should be focused on category 'C' because of its less quality.

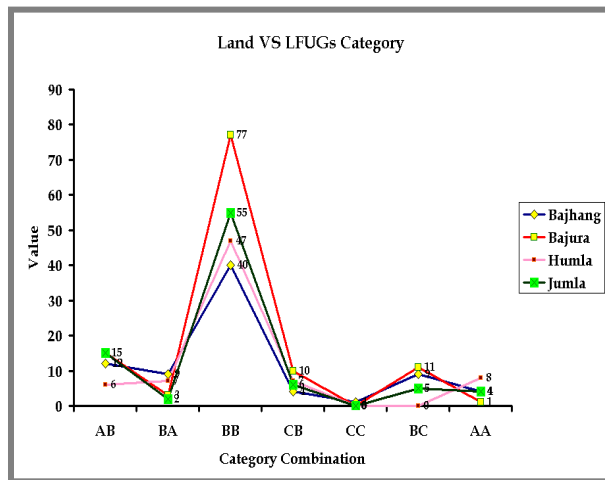


Figure 2: LF land Vs LFUGs Category

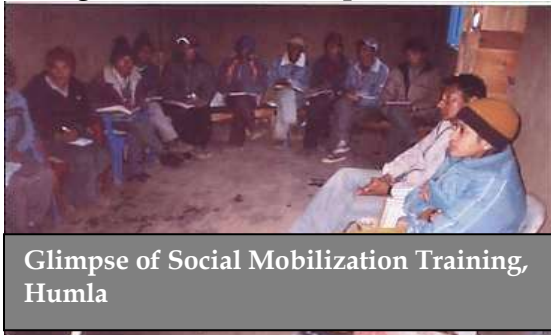
Analytical study between the relationship of LF land category and LFUGs category is very necessary to have overall scenario of land along with group quality.

While we compare the combination of land quality and the existing LFUG category, only 17 LFs considering all four districts have both 'A' quality (land and LFUG). Rests 48 LFs have land quality of 'A' category and LFUG category of 'B' category. About 21 LFs have land category of 'B' category and LFUG category of 'A' category. So, those LFs have potentiality to

develop land to make it fall under 'AA' category. Dominant combination includes medium category of land and LFUG (BB) i.e. 219. Such LFUGs have primary chances to develop land and mobilize LFUGs to make it fall under 'AA' combination. Further, one LF has less quality of land as well as LFUG category (CC). Next 28 LFs have land quality of 'C' category and LFUGs of 'B' category. Thus, social mobilization should be focused on those 26 LFs having LFUGs quality 'C' to improve its quality. Each district scenario has reflected under Figure 2.

3.3. Social Mobilization and Capacity Building:

Social mobilization is the primary task of this project. It includes all process of information dissemination, awareness creation, motivation and mobilization in all development activities especially for leasehold forestry development. Basically, the process of awareness creation and mobilization is very difficult even for an educated people. Even more, mobilization of poor, socially disadvantaged/excluded people is tougher. Concurrently, our project has targeted poor, deprived/socially discriminated people and women. So, the component of social mobilization is very tricky in this project. Simultaneously, capacity building of those targeted people is very essential. Nevertheless, capacity development related activities are less in this phase of the project as we have already conducted various trainings for those targeted people and due to budget constraint as well. Accordingly, some sorts of trainings like account keeping, social mobilization have been conducted at field level and social mobilization training at Regional level in this phase.



Glimpse of Social Mobilization Training, Humla

Five days social mobilization training at district level in Humla, Bajhang and Bajura district have been conducted in presence of 28 staffs.



Participants on social mobilization ToT, Nepalgunj

Five days Social mobilization ToT has been conducted at Regional level in presence of Forester, Monitoring Officer, Social Mobilization Officer, Ranger, Senior Social Mobilizer and Social Mobilizer from each program implemented district on 30th June to 4th July, 2007



Group discussion on Social mobilization, progress report, proposal and case study writing

One social mobilization, progress report, proposal & case study writing training has been conducted to 20 staffs at Regional Office for a duration of 5 days.

Four Basic Account Keeping training to Social mobilizer have been conducted in all project implemented districts for five days. Total number of participants was 22 in the training.

Nine days GPS Operation, Land Development

and EIA/IEE training, has been conducted to the Rangers from all program implemented districts coordinated by MLD/WUPAP and organized by DFOs of WUPAP districts on 10-18 Jan, 2008.



Book Keeping and Accounting Training at district level, Humla



Participants of GPS Operation, Land Development and EIA/IEE training

14 book keeping and accounting trainings have been conducted to 123 LFUGs in all four districts. Total number of participants are 291 where as female participants are 48.45% of the total participants. Further, 5.15% of the total participants belong to socially deprived group so called dalit.

3.4. Leasehold Forestry Development:

Social mobilization is very essential prior to LFUGs formation and strengthening. It encompasses a series of activities i.e. orientation, consultation, sensitization, conflict identification and proper mitigation, capacity building, technology transfer and empowerment as well.

Moreover, practical process of LFUG formation (i.e. Box 1) is very worthy to form a group consisting of targeted people. Major role of DEPROSC Nepal is to facilitate the community at each level of the whole process to form those groups. In other hand, as we have the major role of social mobilization, we have to act as bridge between the community and the relevant line agencies during LFUGs formation as well as implementation of operation plan. Accordingly, we have formed altogether 180 LFUGs in this II phase of the project whereas 3380.46 ha of land have been handed over 179 LFUGs. Consequently, 3069 members have become direct beneficiaries of the program comprising 15% of socially excluded group so called dalit and 8% belongs to ethnic groups. Further, 52.69% of the total beneficiaries are female. Other details with regard to this LFUG formation and handover of each district have shown in below **Table 6:**

Box 1. Process of LFUG Formation

Formation of COs by LDF.
Application to DFO for leasehold group formation
Meeting of COs for identifying poorest of the poor
Detail Household survey.
Wealth / well being ranking
Community consensus
VDC Consensus
Survey of lease land
Group formation
Application to DFO for registration
Publish 35 days notice from DFO
OP preparation in collaboration with DFO DLSO, DADO, LDF and DEPROSC-Nepal
OP submission to DFO
OP Approved by DFO and sign in lease certificate
Lease Certificate handed over to leasehold group by District Forest Office.
Implementation as per OP

Table 6: Progress Status of LFUGs in II phase alone

S.N	Major Outputs	Unit	Jumla	Humla	Bajhang	Bajura	Total
1	LFUGs formation	No.	43	42	40	55	180
3.	Community Consensus	No.	43	42	40	55	180
4.	35 days Notice Published	No.	42	42	40	55	179
5.	Lease Land Survey	No.	43	42	40	55	180
		Ha	947.94	855.21	874.58	800.5	3478.23
6.	Operational Plan Preparation	No.	40	42	40	55	177
		Ha	806.17	855.21	874.58	800.5	3346.13
7.	Operational Plan Submitted to DFO for Approval	No.	40	42	40	55	177
		Ha	806.17	855.21	874.58	800.5	3346.13
8.	Leasehold Forestry Patta approved and handed over to LFUGs	No.	40	42	42	55	179
		Ha	806.17	854.71	919.08	800.50	3380.46
	Group Composition						
	Male	No.	334	290	365	463	1452
	Female	No.	448	280	454	435	1617
			(57.29%)	(49%)	(55.43%)	(48.44%)	(52.69%)
)				
	Occupational and Deprived Caste (So called Dalit)	No.	38	66	152	205	461
			(4.86%)	(11.58%)	(18.56%)	(22.83%)	(15.02 %)
	<i>Ethnic Group</i>	No.	0	228	13	0	241
				(40%)	(1.59)		(7.85%)
	Total Beneficiaries		782	570	819	898	3069

According to the above table 6, in this II phase alone, the most number of LFUGs i.e 55 has been approved in Bajura district consisting of 800.50 ha of leasehold forestry land. Similarly, the least number of LFUGs has been approved in Jumla district i.e. 40 which has comprised 806.17 ha of leasehold forestry land. Equal numbers of LFUGs i.e 42 have been registered in Humla and Bajhang district consist of 854.71 ha and 919.08 ha respectively. Moreover, LFUGs composition also varies in different district. Gender balance has more found in Jumla district i.e. 57%. Concurrently, female representation in Bajhang, Humla and Bajura district i.e. 55%, 49% and 48% respectively. Social inclusion is also prioritized during LFUG formation as per the burning concern. Consequently, nearly 23% of socially deprived groups have involved into Bajura district. Similarly, nearly 19%, 12% and 5% of socially disadvantaged people have involved in Bajhang, Humla and Jumla district respectively.

Table 7: Progress Status of LFUGs compiling both I and II phase

SN	Major Outputs	Unit	Target	First Phase	Second Phase	Total
1	LFUGs Formation	No.	260	189	180	369
2	Community Consensus	No.	260	189	180	369
3	35 days Notice Published	No.	260	178	179	357
4	Lease Land Survey	No.	260	177	180	357
5	Operational Plan Preparation	Ha.	6000	3474.4	3478.23	6952.63
		No.	260	175	177	352
6	Operational Plan Submitted to DFO for Approval	Ha.	6000	3447.15	3346.13	6793.28
		No.	260	175	177	352
7	Leasehold Forestry Patta approved and handed over to LFUGs	Ha.	6000	3447.15	3346.13	6793.28
		No.	260	168	179	347
		Ha.	6000	3278.9	3380.46	6659.36
	LFUGs Composition					
	Male	No.		1425	1452	2877
	Female	No.		1101	1617	2718
				(43.59%)	(52.69%)	(48.58 %)
	Total member/Households	No.		2526	3069	5595
	<i>Occupational and Deprived Caste (So called Dalit)</i>	No.		519	461	980
				(20.55%)	(15.02%)	(17.52%)
	<i>Ethnic Members</i>	No.		273	241	514
				(10.81%)	(7.85%)	(9.18%)

According to the table 7: about 6659.36 ha of leasehold forestry land has been handed over to 347 LFUGs till date in all four districts.

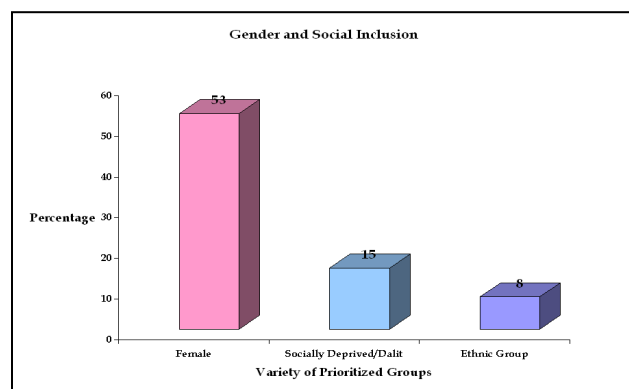


Figure 4: Status of Gender Balance and Social Inclusion in II phase

While we analyze LFUGs composition, female representation has increased in II phase i.e. 52.69% comparing to the I phase which had 43.59% of female. Contrary to this, representation of socially disadvantaged group has declined from around 20.55% to

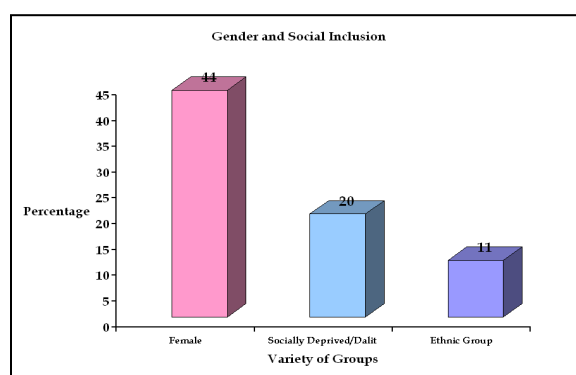


Figure 3: Status of Gender Balance and Social Inclusion in I Phase

15.02%. Major reason is that there is not any disadvantaged group dwells in the selected areas of II phase. Similarly, Ethnic group representation in approved LFUGs has also decreased from nearly 10.81% to 7.85%.

3.5 Income Generation and Micro Enterprise Development:

The project has targeted poor people. Such people have problem of daily subsistence. Thus, naturally it seems little unlikely to mobilize them for leasehold forest development for future. They do have immediate need for their daily requirements; they can't wait for even few days while they use their time in degraded forest development. Thus, the project has also internalized such problem and provisioned some immediate input support to energize those LFUGs for leasehold forest development. Moreover, the project has designed to support those groups from immediate livelihood improvement related program from each line agency as well. In addition, we have also separated some input support to energize those LFUGs as well as to motivate them towards future benefit. Though the support was very limited, it has also worked as seeds to their sustainable livelihood improvement. Brief details regarding to the status of all input support in this II phase of the project as follows:

3.5.1. Vegetable Seed Support:

Altogether, 301.15 kg of vegetable seeds have been supported to 298 LFUGs considering all four project implemented district. About 50% of beneficiaries are female out of total 4565 beneficiaries. Similarly, 15% of beneficiaries are dalit where as 11% of beneficiaries belong to ethnic groups.

Accordingly, 83.89 kg of vegetable seeds were supported in Bajhang district where 55% of the beneficiaries are female out of total 1395 beneficiaries. Further, 17.85% of beneficiaries are socially deprived members and rest 0.93% of beneficiaries belongs to ethnic group.



Glimpse of vegetable farming, Bajura



Glimpse of vegetable farming, Humla

In total, 58.72 kg of vegetable seeds were supported in Bajura district. Whereas, 34% of total 702 beneficiaries are female. Nearly, 25% of beneficiaries belong to dalit members. Here is not any beneficiary belongs to ethnic group as the selected LFUGs have null representation of ethnic group.

Totally, 76.74 kg of vegetable seeds were supported in this phase for Humla district. Near about 44% of beneficiary who got

vegetable seed support are female. Further, nearly 10% of total beneficiaries are dalit members.

Similarly, 81.8 kg of vegetable seeds were supported to LFUG members in Jumla district. Nearly, 56% of vegetable seed support recipients are female and nearly 10% are socially deprived beneficiaries (*dalit*) in Jumla.

3.5.2. She Goat Support:

Altogether 248 she goats have been supported considering all four project implemented districts and the number of beneficiary LFUGs are 123 out of all project implemented districts. Total beneficiary numbers are 212 while the targeted number of beneficiary households is 160.

While we compare each district separately, 79 she goats have been supported to 27 LFUGs in Bajhang in this II phase. Diversified members including socially deprived and female were focused during such support. Accordingly, near about 86% of beneficiaries are female and nearly 37% belongs to socially deprived group so called *dalit* members.

Likewise, 44 she goats were supported in Bajura district for 43 LFUGs. Beneficiary composition is also diversified as closely 26% of total beneficiaries are female and 28% beneficiaries are socially excluded *dalit* members.



LFUG members with she goat, Bajura



Herd of she goats at the time of support, Humla

In Jumla, 40% of beneficiaries are female out of total 55 beneficiary members. Total number of she goat support was 59 and beneficiary LFUGs were 35. Further, 9% of beneficiaries belong to socially undermined *dalit* members.

Similarly, 66 she goats have been supported in Humla for 18 LFUGs. Among which, 46% of beneficiaries are female and nearly 43% of beneficiaries are socially deprived group.

3.5.3 Buck Support:

In total 24 bucks have been supported to 22 LFUGs including all project implemented districts. Moreover, 25% of total beneficiaries are



A buck supported in Bajura

female and nearly 17% of beneficiaries belong to socially excluded dalit members. In which, 7, 4, 7 and 6 bucks were supported in Bajhang, Bajura, Jumla and Humla district respectively. It has really serviced to those poor LFUGs members for breeding improvement of she goats though it seems very less in figure.

3.5.4. Animal Health Campaign:

Altogether, 13 animal health campaigns were conducted to treatment livestock of LFUGs members in collaboration with District Livestock Support Office. Finally, 12380 Livestock got treatment during the animal health campaign and nearly 120 LFUGs members became beneficiary from the animal health campaign. Direct beneficiaries of animal health campaign are 1442 considering all four districts.



Glimpse of animal health campaign in Jumla

The highest number of livestock treated during the campaign was in Jumla district i.e. 4129. Further, total number of livestock treated in Humla, Bajhang and Bajura district were 2108, 1185 and 829 respectively.

3.4.6 Exposure Visit

Finally, a exposure visit was conducted in all districts. In Jumla, 5 LFUG members of Patmara VDC were taken to Malikathanta VDC to demonstrate apple saplings plantation as well as land development. In other hand, 5 LFUG members of Malikathanta VDC were taken to Patmara VDC and Chandannath VDC to demonstrate land development, kutki cultivation, and forest protection. In Bajhang, 5 LFUG members of Dantola were taken to Pauwagadhi VDC to demonstrate different tree species and NTFPs plantation. In other side, 5 LFUG members of Pauwagadhi VDC were taken to Dhamena VDC to demonstrated forest protection and NTFPs cultivation. In Bajura, 9 LFUG members of Batabise-5 were taken to Kailashmandu and Bramhatola to demonstrate forest protection and NTFPs cultivation. Similarly, 5 LFUG members of Bandhu-9 were taken to Pandusen and Kotila. Consequently, 4 members were female out of total participants. In case of Humla, 10 LFUG members from Hepka VDC were taken to Lali VDC to demonstrate NTFPs cultivation on LF land.

3.4.7 Stationary Support

Altogether 347 LFUGs were developed. They need to submit application to different line agencies and to keep minute into their regular meetings. So, stationary support to their institution management is much needed. However, some LFUGs which are newly

formed have got such support from DFO. Thus, such input support was also provided to old 168 LFUGs in all districts. Such package included minute book, ledger book, scale, stamp pad, stapler, record file, punching machine etc.

3.4.8 Forest Tools Support

Scature and Prunning saw is the basic tools to use during fodder collection as well as other cleaning operation into LF land. Thus, such tools were also provided to newly formed 174 LFUGs in all districts.

3.6 Saving Status of LFUGs in different districts

Saving in LFUGs is also very practical concept to make them independent for their daily livelihood as well as to initiate any income generating activities to sustain their livelihood. Accordingly, all LFUGs have habituated to make regular saving into their group and deposit it into community organizations. Consequently, total number of regular savings of all districts has become 4621195 and total figure of saving from other sources has become 319540 among which 85% of the total saving has been mobilized mainly for their livelihood improvement and income generating activities such as she goat farming, grocery shop, vegetable farming and other income generating activities. District wise details with regard to this saving have shown as follows in **Table 8**:

Table 8: Saving Status of LFUGs in all district till date

S.N.	Saving Details	Bajura	Bajhang	Humla	Jumla	Total
1.	Regular Saving	1447290	880193	975910	1317802	4621195
2.	Saving from other sources	76890	142650	37500	62500	319540
3.	Saving mobilization	1295470	935550	867266	1103965	4202251
4.	Remaining Balance	228710	87293	146144	1380302	1842449
5.	Total Saving	1524180	1022843	1013410	1380302	4940735

3.7 Credit Capital provided to LFUG through LDF

LFUG members are all mandatory to be associated with COs. Eventually, those members can take loan from the LDF through COs. In the present scenario, numerous LFUG members have initiated different income generating activities from the loan taken from LDF. Current details of loan taken from LDF has shown in below **Table 9**:

Table 9: Credit capital taken by LFUGs in all Project Implemented Districts

District	LFUG (No.)	Total Loan Amount (Rs.)	Repayment Rate(%)
Bajhang	25	866000	82
Bajura	15	254000	88
Humla	20	1640000	93
Jumla	16	520000	51
Total	76	3280000	78

Data Source: WUPAP, PCU, 2009

However, the repayment rate is the highest in Humla district and the least in Jumla district. Above repayment rate is only the average calculation from the record of WUPAP, PCU. So, it may slightly vary to the actual one. All the saving related information and loan details have been compiled as per COs so it became little problematic to find out the separate LFUG credit capital details. Nevertheless, above table reflects very clearly about the repayment scenario and total credit capital provided to LFUGs.

4. Follow up activities:

Land development as well as livelihood improvement related activities are immersed after the legal handover of particular patch of degraded forest land to the identified poor group. Thus, leasehold forest approval is just the start of the whole program. Though, the prime responsibility of DEPROSC Nepal is to handover potential degraded forest area to the promising poor community, follow up to the registered LFUG has also done to make them access to the relevant sector and to put their demand as per need. Eventually, some data related to the task of land development and income generating activities from support of various line agencies has also compiled. Accordingly, district wise different sorts of terrace improvement, fruit, fodder and timber plantation, NTFPs along with other MAPs species cultivation, nursery establishment, irrigation facility have been provided to those functional LFUGs.

In Bajhang district, altogether 14 ha of LF land has been improved by terracing. In addition, 21 ha of LF land have been planted with fruit, fodder and timber species. Other NTFPs/MAPs have been cultivated in 11 ha of LF land in this second phase duration. Moreover, 17 LFUGs got nursery

management program and 15 LFUGs got irrigation support to their LF land. Survivability of NTFPs is found to be more (i.e. 70%) than other species (i.e. 40%). In the aspect of input support to IGAs, 75 she goats have been exchanged from the total support of 100 she goats and further earned about Rs. 57400. About 7 bucks supported in this II phase has supported to breeding improvement of around 529 she goats. About 3LFUGs have started vegetable farming and earned Rs.3000/month. Accumulating all up to now, total earnings have become Rs. 67050. Nearly, Rs 19940 have been earned from poultry farming and still 200 poultry have remained with some LFUGs. One model LF member has earned

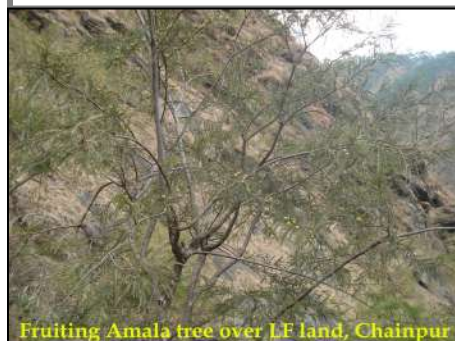
Rs. 7000 from a couple of poultry, additionally bought 3 she goats and 1 cow. Previous support of a couple of piglet has made an earning of Rs. 108000 which was used to buy a buffalo and other daily needs fulfillment. Beside this, other line agencies have also provided support to those LFUGs for income generating activities.



Ginger and Turmeric Plantation on LF, Chainpur, Bajhang

Box 2 (Bajhang):

- *About 620 kg of Ginger and Turmeric has been produced in Lacchim Kha, LF at Chainpur-2 of Bajhang district. However, the market problem has obstructed to harvest it from LF for sale.*
- *115 banana saplings have been planted on LF and reached to fruiting stage*
- *10 ha LF land belonging to 10 different LFUGs have been improved by terracing*



Fruiting Amala tree over LF land, Chainpur

About 44% of LF has totally controlled open grazing and rest other LFUGs have provisioned rotational grazing by protecting the portion of plantation site with in LF. Similarly, 55% of LFs have properly kept record of their savings, income and expenditure details. Further, one great indirect benefit for the identified poor LFUG members is that about 2hrs time has been saved of each member to collect fodder and can able to use the time into other productive work.



Cabbage farming from the supported seeds by DEPROSC Nepal, Bajura

Box 2 (Bajura)

- *Around 2798.18 hrs time of 1771 poor farmers involved into LFUGs has been saved due to availability of fodder/green grass in near LF land.*
- *94% of LF land have been controlled from open grazing*

In Bajura district, 27.25 ha of LF land have been improved by terracing in this II phase duration. About 52.55 ha of LF have been planted with fruit, fodder and other timber species. In addition, 49.5 ha of LF have been cultivated with NTFPs/MAPs. Further, 12 nursery management program have been provided to different LFUGs which has produced about 103000 seedlings and irrigation facility has been provided to 102.75 ha of LF land. In the aspect of input support made by DEPROSC Nepal towards IGAs, 69 she goats have been supported and 80 off springs were produce among which 52 became exchanged. Further, 9 bucks have been supported for breeding improvement. In total, 92.72 kg of vegetable seeds have been supported and around Rs. 179580 have generated from vegetable farming by few members out of total 1302 beneficiaries. Besides this, IGAs related support has also been provided to those LFUG members. Moreover, one encouraging progress

due to establishment of LF is that about 94% of LF land has been protected from open grazing. Other the most precious indirect benefits obtained from LF management is that 1.58 hrs of time have been saved of each member of LFUGs due to the availability of fodder/green grass in their own LF land. So, totally 2798.18 hrs of time have been saved to 1771 poor farmers of Bajura.



In Humla district, altogether 150000 NTFPs have been cultivated in 15 ha area of LF land. Further, 14350 fruit, fodder and timber species planted in about 23 ha of LF land. Among which, survivability of NTFPs is more satisfactory (55%) than other species i.e. 40%. About 6 LF land has also been improved by terracing with in this period of II phase. In IGAs support, 142 she goats were supported among which 44 off springs produced and 35 she goats were exchanged to different members of LFUGs. About, 15 she goats were died due to climate over there. In total 8 bucks were supported among them 5 died and currently 3 bucks are only providing service. About Rs 350940 has been earned by LFUGs member with the support of 135.74 kg of seeds did by DEPROSC Nepal.

Moreover, a candle making training and bee keeping training were provided to a poor member, Mr. Boom Lama of Toral Odar LFUG, Humla. Mr. Lama was also supported with candle frame at the time training by DEPROSC Nepal. Now, he is enduring the job of candle making in spite of having scare of raw materials. In addition, the member has still kept 120 Bee hives and produced wax after extracting honey. In cumulative figure, Mr. Lama earns Rs. 450000/annum (Rs300000 from the sale of honey and Rs.150000 from the sale of candle making)



LFUG members cleaning dried Kutki for storage, Patmara, Jumla

In total, 170 she goats have been supported among which 66 were exchanged with LFUG members, 53 were died and 117 new off springs were produced. Previous support of 1241 poultry provided benefit of Rs. 32000 and

Box 3 (Humla):

- Selected 4 LFUGs have done NTFPs cultivation in their 5 ha LF land from 1 kg seeds of Attis, Katuki, Jatamansi, Panchaule, Sungandhawal and Pakhanbed (150000 seedlings). Further, 139

Attis inventory in Patalima LF, Humla

as provisioned a watcher. Finally, survivability rate has also reached to 80%

- In other hand, 1515kg of naturally existing NTFPs (Attis-500kg, Guchhichyau-15kg, Katuki-1000kg) were sold and earned Rs. 725000/-by LFUGs member into their LF land.

In Jumla, 39 LFUGs have improved their LF land by terracing. Nearly, 26 % of total LFUGs have completely prohibited open grazing. Moreover, 36 LFUGs have kept fair record of each monetary detail related to LF.

Box 4 (Jumla):

- 35 ropani of LF land in Patmara VDC have been cultivated with Kutki and produced 160kg of Kutki worth Rs. 48000 regarding the current market price of Rs.300/kg
- Initial support of 4 she goats have become 18 she goats and 12 members benefited from the exchange program
- 6 LFUGs have well managed apple orchard with 1020 saplings and its survivability is also 60%

still available 325 from that support with LFUG members. A LFUG member earned Rs. 61000 from a couple of piglet support and used for household chores.

4. Problems Encountered:

- All the project districts are geographically very remote and have harsh climate to work. Thus, accomplishment of each sort of activity was very difficult in cold climate and snow fall period. Thus, natural condition of the project districts has itself become a major hindrance to launch any program.
- Whole the country was in period of political instability. Thus, all sorts of development were very difficult due to such political influence at the field level.
- Field mobility was very difficult in such insurgency period. Redundant inquiry and unwanted punishment to all people whoever comes on the way had made the field work very troublesome.
- Initially unclear roles and responsibility of all line agencies had made the inauguration of the program little tricky. Moreover, at the starting of II phase new VDCs selection as per the target could not be on time so it took some period to formally speed up the program.
- Priority over Community forest at the policy level as well as on grass root level has made approval of leasehold forest difficult by creating objection at the time of approval.
- The entire project implemented district is geographically remote so has little access to urban areas. Consequently, frequent turnover of government staffs as well as other relevant bodies is prevalent. So, joint implementation as well as coordination became very difficult in comparing to the need.
- Previously, lengthy process of LF handover has made the program time consuming and less assertion about the handover of LF.
- As already discussed, slow speed of COs formation has made the formation of LFUGs time-consuming as formation of COs is needed at first prior to form LFUGs.
- Different line agencies have been providing support on self basis contrary to package basis. Moreover, timely deliver of such input is also a trouble. Thus, inadequate input support was been a severe problem for overall program implementation.
- Coordination which is very needed to implement the program relied on individual's nature rather than any official solid system.

- Various LFUGs have grown some NTFPs into their leasehold forestry land. A measurable amount of its production has also come however the proper market for its sale is really lacking. Eventually, road head traders are growing rather than any particular mechanisms to add value to the final product.
- As the project nature has defined the need of implementation on joint venture. Thus, matching pace of each line agency was become difficult at the initial period of the project. Limited Pace of the project at the initial stage
- Some sort of technical problems like inadequate irrigation facility, few plantations, less survivability, inadequate technical know how at the time of plantation and land development was resulted due to insufficient human resource.
- Lack of adequate collaboration with LDF and DFO for effective social mobilization of the existing community was also a major problem encountered during project implementation
- Illiteracy of LFUGs member was also a problem to keep record and write minute during meetings. So, sustainability of those LFUGs is also in dilemma.
- Policy level constraint as the provision of discarding handing over leasehold forest if there is any objection and anyone claims it to make CF had also created a problem during overall implementation
- Lack of consistency between the time frame of line agencies and DEPROSC Nepal was also a great problem during planning and implementation of any activity with in the program.

5. Applied Solution Measures:

- Firm work from the very beginning was the best solution applied to tackle all those problems
- Typically, all staffs worked relentlessly as a neutral body at the period of political instability
- In some situation, field movement was also controlled as far as possible
- Time and again meetings at District level and Regional Level to make clear the modality of the project
- Supporting the provision of operation plan approval at the district level was also a major solution applied to sort out the lengthy process of operation plan handover.

- Recurrent lobby with line agencies to deliver input support on time and in adequate manner.

6. Lesson Learnt:

- LF forest mapping has made easy to be familiar with each project area prior to implementation.
- Protection of LF alone can generate substantial output. For instance, fodder production, NTFPs production
- Demarcation should be on mind rather than to be on land. Thus, social fencing is better in comparing to technical fencing for the protection of degraded forest land.
- Joint monitoring is one of the best options for overall supervision and technical assistance. For instance, provision of joint monitoring including all representatives of political parties, line agencies and other relevant bodies in Bajura and Humla has made the program center of attraction and productive with in the entire district.
- LFUGs should be focused as typically different entity than COs. Currently, LFUG members are putting their savings into COs and getting input support through COs. If our targeted beneficiaries are really poor people, why can't we focus fully on LFUG
- IGA activities are one of the major tools to mobilize socially excluded and disadvantaged poor people and make their livelihood sustainable.
- LF management has some indirect positive impacts to the existing climate i.e. ground water recharge and time saving. Because, ground water has been recharged after the protection of degraded forest land in some areas. Some members have initiated other income generating activities after associating into LFUGs and protecting degraded forest land
- Primarily handover of degraded forest land was challenging, later the development of such degraded forest land is more tough.

7. Recommendation:

- Quality of LF land should be specified into LF act as well
- Policy should be changed somehow either to made threshold for CF similar to leasehold forest i.e. forest below 20% crown coverage or to determine the threshold for number of objection during LFUGs approval process.
- Social Mobilization should be focus on groups which falls under 'C' category and lobbying should be done for leasehold forestry land lies on 'A 'category
- Coordination for off farm IGAs should also be prioritized to pursue through LFUGs. As all farm based income generating activies have long gestation period in comparing to other off farm activities, skill developing trainings should be further prioritized into the project.
- Support activities should go on package basis to the prioritized LFUGs and those LFUGs should be focused as model LF to insist other LFUGs
- It would be more better if regular activities of all line agencies also go through LFUGs considering it as nucleus body

Protection of LF alone can generate substantial output

A case study of 5 LFUGs, Khagalgau, Humla

Western Upland Poverty Alleviation Project is working in the Khagalgau, second largest VDC of Humla district from last six year. Initially, in spite of having ample valuable NTFPs, there was a trend of unsustainable harvest of those NTFPs along with uncontrolled grazing. Later, five LFUGs were formed through the support of DEPROSC Nepal under the WUPAP Simultaneously, Forest Development, NTFPs management and cultivation, marketing and other capacity building trainings were also provided to those LFUGs through the support of

DEPROSC Nepal and District Forest Office, Humla. Moreover, a program of land development has also been provided to those LFUGs. Firstly, grazing control and unsustainable harvest of NTFPs was very hard. So, they establish a committee consisting of 16 forest guards to oversee all those 5 LFUGs. The committee published a notice to strictly prohibit uncontrolled grazing otherwise fine of Rs 50/livestock and Rs 500/person was also provisioned in the notice. Previously, it



Flowering Attis in a LF land of Khagalgau VDC, Humla

was very hard to control grazing so they could raise Rs 12000/- into their LFUGs fund. Timely, grazing control condition improved and now they have wholly controlled grazing. Total forest areas have been divided into different blocks. Further, they are harvesting NTFPs production from each block at one time on rotational basis. Recently, they collect 500 kg Attis (*Aconitum himalayai*), 1000 kg Katuki (*Picrorhiza scrophulariflora*) and 15 kg Gucchichayau from the protected leasehold forest land. Now a day, market price of Attis, Katuki and Gucchichayau is Rs 800, Rs 190 and Rs 9000 per kg respectively. In total, they raised Rs 7, 25000 from the sale of those NTFPs according to the verbal conversation made with a chairperson of Khyongjyong LFUG, Mr. Rinjen Lama. Now, they have not only get benefit from such production but also the condition of leasehold forestry land has also been improved. Forest guard committee is also actively working against uncontrolled grazing.

Livelihood upliftment under WUPAP

A case study of Mr. Amar Singh Sarki, Kailashmandu-8, Bajura

Small support has made a dramatic change into my livelihood is a version of a LFUG chairperson, Amar Singh Sarki, Betaldevata LFUG, Kailashmandu-8, Bajura. The LFUG is associated into Kuntemandu Community Organization. Before associating into LFUG, Mr. Sarki had very difficult to sustain his daily livelihood as all his family wealth had been lost in gambling by his elder brother. Other non forest based activities could not uplift his livelihood. Later, the VDC was selected for Western Upland Poverty Alleviation Project and DEPROSC Nepal facilitated them to form the LFUG. Moreover, he stood as chairperson of the LFUG however daily subsistence was still a problem to him in absence of any income generating source. Consequently, he took loan of Rs 15000 from LDF under the WUPAP. Then, he bought 5 she goats to apply goat farming. After 6 months duration, 3 offspring produced and became 8 she goats. Among them 2 were sold into market at Rs. 4000 and bought a cow from that money. Leasehold forest protection has restored fodder, so there is not any problem to raise livestock. He also started to sell milk into the market. After 1 year, he sold wholly 18 she goats at Rs. 35000 and payed loan of LDF. Further, he bought a buffalo at Rs. 15000 to endure milk sale. Remaining Rs. 10000 was used for his family requirements as well as to initiate vegetable farming.

Currently, he earns Rs 3000/month from milk sale and Rs 600/month from vegetable selling into the near market. He said with happy that now I don't have to worry for daily subsistence and I am sending my children to schools. Their future has also been secured to some extent. It's all because of associating into leasehold forest user group and getting support from DEPROSC Nepal. I can't stay without giving thanks to DEPROSC Nepal for showing me the right path of livelihood improvement.



Amar Singh Karki sharing his experience

Social Economic Upliftment after LFUG Formation

A case study of Gulaf LFUG, Kotila-9, Latubasti

Gulaf Leasehold Forest Users Group, Kotila-9, Latubasti was established in 2003 consisting of 5 female, 9 male and 8 dalit members. Previously, there was a big problem of fodder collection. It used to take long time that they were compelled to go 5 hrs walk



Gulaf leasehold forest, Kotila-9

to collect fodder. Mutual cooperation was also lacking among all community members. Nevertheless, after the formation of LFUG, cooperation among all members has also enhanced.

Each member has started vegetable farming as an alternative occupation. They are earning Rs 5000 to 7000 per year by selling fresh vegetables into the local market (Kolti bazaar). They have completely controlled open grazing by making a provision of watchman. They just have started stall fed as ample

grasses are appearing into the leasehold forest land. Milk selling is an occupation of those members and they earns approximately Rs. 3000 to Rs. 4000 per month. Now, they have enough time to take care of their children and send them to school in comparison to the past. They have been capacitating to approach each line agency as per their need. In average, 80 % of decisions made by their group have been implemented. Monthly saving of Rs10 per month has been accumulated as Rs 14700 till date. Eventually, they have become independent into the society while they require huge money.

An active leasehold forest users group, Ghadikumedikatna, Jumla A case study of Malikathanta VDC, Jumla

Ghadikumedikatna leasehold forest was formed in 2004 A.D. with the technical assistance of DEPROSC Nepal in Jumla district. Simultaneously, regular saving, group meeting, forest development has also been continuing. Monthly, Rs.10-20 saving was initially very hard for them now they are waiting for mid of each month to drop their monthly saving. Socially discriminated women members are also raising their voice into the LFUG's meeting. Mr. Haridevi Budha a female member of the LFUG put her views "We are very happy to participate into the LFUG meetings and put our voice". We really feel content to participate in such group meetings and become proud that women rights have been started to address even in Nepal. In the past female used to be shy to put their voice into mass, if they put their voice, it will not be heard and if they heard, it would be considered for decision making. Now, the situation has been totally changed into the LFUG. Each member has idea of saving and its mobilization in contrast to previous condition. Mr. Nudhe Budha, president of the LFUG said that we are very indebted to DEPROSC Nepal for making us aware about the group saving and its mobilization under leasehold forest group. Now, we do have Rs 3870 per member accumulated from such saving. Beside this, DEPROSC Nepal also supported them to make boundary around leasehold forest area under Emergency Operation Program. DFO also supported them by 0.5 ha terrace development program worth Rs. 50000/-. In other hand, protection of different species like Apple, Sugandhawal, Kutki, Amalbed, Pomegranate, Deodar, Sallo on terrace is also enduring. Currently, they do have 1.25 ha totally developed leasehold forestry land with different species of fruits and NTFPs. In addition, they also got 2 she goats and one additional as gift from DEPROSC Nepal. As the LFUG consists of the most targeted people, they are performing very actively. So, the foundation has already been established and they have become aware too towards land development.



LFUG member carrying water pot to irrigate on plantation, Malikathanta VDC, Jumla

Attis (*Aconitum himalayai*) became popular among the LFUGs members Case Study of a Hepka VDC, Humla

Hepka VDC is primarily selected VDC from the point of view of leasehold forestry land availability. However, leasehold forest user groups were not formed till 2007 due to the lack of mutual cooperation among the community people. Finally, cooperation of DEPROSC Nepal and Tangin village leads to a formation of four LFUGs (Kakal, Dongmuchu, Singirmu and Jaljusa) into the tangin village (Hepka VDC- 8, 9). The selected area is full of NTFPs like Attis (*Aconitum himalayai*) and land quality is also very good with respect to NTFPs cultivation.

So, Attis (*Aconitum himalayai*) cultivation has also been started in coordination with DFO and LDF (WUPAP). Irrigation facility was also provided from 2.5 km long distance. Altogether 40 households built 20-25 plots with in 3 ha land and cultivated 50000/- seedlings. Fencing has also been provided to the cultivated forest area to protect it from illegal grazing. Nevertheless, over grazing

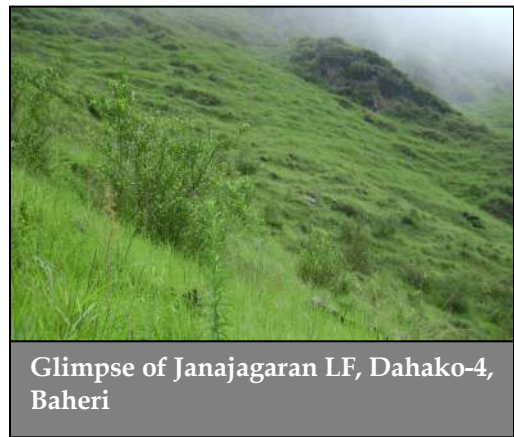
had still been a problem prevails into the area. So, provision of forest watcher was also made into the cultivated area on rotational basis from each house per day. System has been wholly developed for the proper management of the available forest area and those members anticipated to cultivate NTFPs into entire leasehold forest area and to take benefits from Attis (*Aconitum himalayai*) root annually. Mr. Narayan Lama, a LFUG member put his views as, we are not getting any benefits at present but we are confident that we will get massive benefits for our livelihood from the sale of its roots via the market price is Rs 750/kg. Further, LFUGs do have interest to cultivate Attis (*Aconitum himalayai*) into their private land if they get an opportunity for any sort of trainings or other capacity developing activities related to NTFPs production.



Glimpse of Attis Cultivating Land, Hepka, Humla

LFUG members move towards fruit tree management in LF land A case study of Janajagan LF, Dahakot-4, Baheri

Bajura district is one the remote districts of Nepal. Dahakot VDC is further more remote area with in the district. In the early period, CARE Nepal makes them raise Citrus species into the available barren land. The plants were satisfactorily growing into the area, after two years period, the project period was terminated and left Bajura. Then, such protection could not become sustainable. The area again started to be degrade. At the same time, WUPAP lunched into the area and the process of LF development was initiated. The land where they had planted citrus species was found as a potential land to form LF and agreed to all. Concurrently, the land was registered as LF including 4 women and 15 men of the area who lie below poverty line. Simultaneously, protection was started; early plantation of citrus species was still there. However, it was not growing due to the lack of protection and sufficient care. After the 3-4 years period, all those species regenerated and become 30 plants from the initial 10 plants. Now, one lemon tree is producing 250-300 pieces of lemon. So, the group members are very happy with such production and using money from the sale of that lemon into social works like support to temple. Ms. Tika Rokaya one member of the LFUG said "degraded forest land has been turned into LF with the support of DEPROSC Nepal; now we are getting tremendous output from the forest". We will get more benefit after 3-4 years however we do have great problem of near market otherwise all the production will be ruined



Vegetable seeds support, a great tool of livelihood improvement:

A case study of Asha Mahatara and Ramila Rokaya, Narkuna Leasehold Forest, Jumla

Narkuna leasehold forest user group was formed in the Patmara VDC since 2002. Simultaneously, vegetable seeds support program was also taken into the group. Ms. Asha Mahatara and Ms. Ramila Rokaya are two laborious farmers having vegetable seeds support. Before such support, they had great problem of daily subsistence and to take care of their children. Even they don't have money to buy vegetable seeds to cultivate on their own limited land. DEPROSC Nepal supported them with some vegetable seeds of cauliflower, tomato, rayo, radish, cabbage, carrot etc. They cultivated it into their private land. Ms. Asha Mahatara shared her experience that I produced lots of fresh vegetables and sold into the local market at Rs. 5000/- which provided me great support to expense on my daily needs and other family requirements. In other hand, Ms. Ramila Rokaya, treasurer of the LFUG also produced sufficient fresh vegetables and sold into the local market at Rs. 500 though she sold it only in near market. Now, they are established as commercial vegetable farmers instead of depending on asking others for their own requirements. Though it was a small support, it has become a great support to enhance the livelihood of socially discriminated groups. They have been motivated to do their own business especially on commercial vegetable farming. Support either small or large may change life and labor neither goes on vain is the version of Ms. Mahatara and Ms. Rokaya of Narkuna leasehold forest.

Leasehold forest initiated to be developed through active participation of LFUGs

A case study of Kholchaur LF, Patmara VDC, Jumla

Kholchaur leasehold forest was established since 2004 under Western Upland Poverty Alleviation Project in Patmara VDC. It is comprised of 5 members including 3 female members. Before associating into leasehold forest, they are hardly sustaining their livelihood through vegetable farming like potato, bean and other NTFPs for 5-6 months. They had to search other seasonal works or to go abroad for rest of the months. Otherwise, they had to ask loan to daily sustenance. After involving into LFUGs, they have initiated regular saving so they don't need to ask with others for occasional need of money. They have accumulated Rs. 2500/- till date into each members account. They further got irrigation support, terrace improvement and NTFPs cultivation program from DFO under Western Upland Poverty Alleviation Project. Primarily, they have planted Kutki into 0.5 ha of leasehold forest and now it has been 80 kg. Considering the present market cost, it worth Rs 32000/-. Despite this NTFPs cultivation, it has also done tremendous job of fodder production by controlling illegal grazing. In the past, they sold it in Rs.2000/- and currently they still have 500 bunch of fodder which worth Rs. 10000/-. Moreover, 100 saplings of apple and okhar have also been planted into the LF area.

Now, they have totally stopped to go abroad for earning and take loan on high interest rate. Their livelihood has totally been changed. So, LF has become their basis for livelihood improvement.

This is the right way to change the scenario of degraded forest and prevailing community

A case study of Suntalagado LFUG, Parakatne VDC, Bajhang

Nothing is impossible against human's constant effort. They can change nature without any advanced equipments with the help of their own effort and mind. Similarly, Suntalagado leasehold forest situated at Parakatne-4 of Bajhang district which was established with the support of DEPROSC Nepal and DFO in 2006 has proved the concept. Unity of the community, social mobilization status and input support of all line agencies are the key indicators to reflect its success said by Mr. Madanraj Sharma, chairperson of the LFUG. Initially, the group members don't have any interest towards forest development. Now, they are fully encouraged to work for forest development. Further, they are conducting regular meetings and discussing into crucial issues of forest management. Finally, they come to a decision and implement it as soon as possible. Ms. Gita Devi Sharma used to say, I let not to be late for any forest related activities. Moreover, in the past year, they got a program of nursery management to raise 2250 seedlings. In addition, they planted 50 saplings of banana and other citrus species. All the species are satisfactorily growing into the leasehold forest area. They do have irrigation facility supported by DFO. Mr. Dhana Devi Joshi, Secretary of the LFUG said, we have made remarkable efforts at low cost to bring this irrigation facility. Concurrently, Ms. Dhana Devi Joshi, member of the LFUG said we have envisioned green forest at the place of early desolate forest areas. The group has also got 3 she goat support and now it has become 5 in number. It has also made great support to sustain their livelihood. Before this, they have not got any support from any other organizations. They are getting support from different line agencies under WUPAP. We are very grateful to DEPROSC Nepal for their facilitation at the period of LFUG establishment said Mr. Sharma, chairperson of the LFUG.